

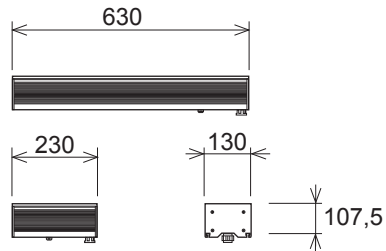
USER MANUAL

LL WASH D...SI-O65

LL43 080 LL43 090

COMPLIMENTS ON YOUR PURCHASE!

All dimensions are in millimeters



Following items are included:

- LL WASH D...SI-O65 with 1m power cable, 2x1m data cable with XLR5pin 1 pc.
- Adjustable mounting bracket 1 pc.
- User manual 1 pc.

Additional items needed:

- Controller compatible with DMX 1 pc.
- Surface mounting:
- Screws and washers M12, M10

Content:

- 01 SAFETY INFORMATION**
 - 01.1 Risk of eyes damage
 - 01.2 Protection from electric shock
 - 01.3 Fire prevention
- 02 PRODUCT SPECIFICATION**
 - 02.1 Technical Specification
 - 02.2 Back panel
- 03 INSTALLATION**
 - 03.1 Unpacking
 - 03.2 Physical installation
 - 03.3 Connecting to AC power
 - 03.4 Control data connecting
 - 03.5 DMX channels
- 04 MAINTENANCE**

ENVIRONMENT



Do not throw away the appliance with the normal household waste at the end of its life, but hand it in at an official collection point for recycling. By doing this, you help to preserve the environment.

01 SAFETY INFORMATION

WARNING!!!

Carefully read before installing, powering or servicing.
Nothing to do if anything misunderstand! Installation can be done only by a qualified professional in accordance with relevant local codes.

01.1 Risk of eyes damage

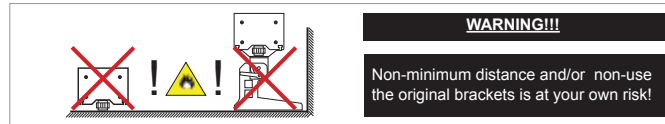
- Do not look directly into LED lamps.
- Do not look into light beam from a distance of less than 40 cm (16 inches)!

01.2 Protection from electric shock

- Shut down power before installation or maintenance.
- Luminaries and recommended AC power supply must be installed by a qualified professional in accordance with relevant local codes. Only acceptable source of AC power and frequency that complies with local building and electrical codes to use.
- Do not use or do not connect the products if the power cable, power plug or fixtures are any way damaged, wet, or if they are overheating.
- Do not modify, alter, or attempt to service the LeaderLight appliance. Doing so will void the warranty.
- Before removing or installing any cover or part of appliance disconnect it from AC power.
- Appliance always connect to earth (eltech.).

01.3 Fire prevention

- Follow all safety consideration.
- Thermostatic switches or fuses never to bypass.
- Device never shield. Around the axis of the fitting (180°) must be maintained space for cooling. Minimum distance from the surrounding objects must be 100mm (4 in.) (figure 1.1).
- LEDs never direct cover with filters or other materials.
- Allowing max. ambient temperature is 40°C (104°F).
- Luminaries never use without mounting brackets. The housing never install directly to the surface.

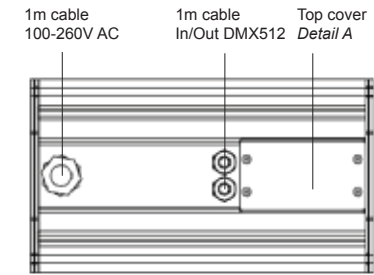


02 PRODUCT SPECIFICATION

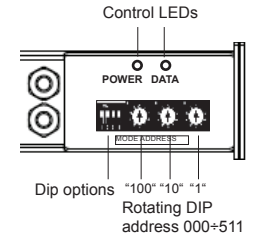
02.1 Technical Specification

Control data connection	DMX 512 In/Out cable 1m long
Lifetime	75.000 hours (70% lumen maintenance at T _a =25°C)
Power connection	AC90-264V, 47-63Hz cable input 1m long
Ambient temp. (Ta)	-30°C ~ +40°C
Cooling	Conventional
Installation	Surface/ suspended mounting with bracket

02.2 Back panel



Detail A:
after unscrew the top cover



Control LEDs Indication

LED	INDICATION	STATUS
POWER (Green)	blinking - 2Hz	OK - inside fixture is everything correct
DATA (Yellow)	light off	NO DMX512 signal
DATA (Yellow)	blinking - 4Hz	OK- income correct DMX512 signal
DATA (Yellow)	fast blinking	NON correct digital signal
POWER (Green)	alternate blinking	Autotest function
DATA (Yellow)		

03 INSTALLATION

03.1 Unpacking

- Unpack carefully.
- This is electronic equipment and should be handled carefully.
- Damaged delivered package or if are any mechanical parts broken - it must be claim immediately by the transport company. Photo pictures as evidence are valuable for future claim.

03.2 Physical installation

- Loading capacity of bearing area has to be at least 10 times the weight of all device clusters (luminaries, clamps, cables, ...) (figure 2.1, 2.2).
- Hairbreadth from combustible materials is 0,5m.

03.3 Connecting to AC power

- **To tackle all Safety Information- 01!**
- For protection from electric shock, the device must be grounded (earthed)!
- It is not necessary to open the fixture before power supply.
- Power supply is solved simple with 1m cable.
- The fixture is equipped with auto-switching power supply that automatically adjusts to any 50-60Hz AC power source from 100-260V.
- Cord plug connections:

Symbol	Pin	Wire Colour	Screw (US)
L	live	brown	yellow or brass
N	neutral	blue	silver
⊕	ground (earth)	yellow/green	green

03.4 Control data connecting

- Control data cable length is specified by Norm IEC929 Annex E4.
- It is not necessary to open the fixture before connecting of DMX512 control signal. Interconnections are realized by 1m cables In/Out.
- Pin connections :
Pin 1 - ground
Pin 2 - signal negative
Pin 3 - signal positive

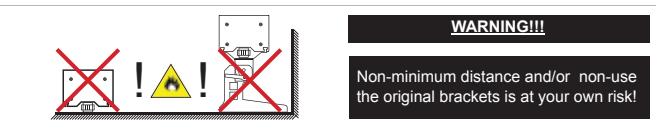
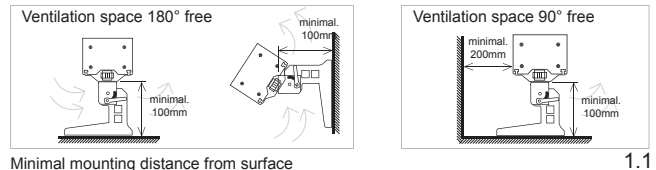
03.5 DMX channels - subject to change

The latest version of DMX channels appendix are on the websites - www.leaderlight.eu

DMX channels and DIP Switch:

Ch.	LL WASH D63-SI-O65-66-102W-015-RGBAW-SC
Mode1: Dip2=Off	
1	Red 1,2,3
2	Green 1,2,3
3	Blue 1,2,3
4	Amber 1,2,3
5	White 1,2,3
6	Master (Dip1=On, Dip4=Off)
7	Strobo (Dip1=On, Dip4=Off)
Mode4: Dip2=On	
1	Red 1
2	Green 1
3	Blue 1
4	Amber 1
5	White 1
6	Red 2
7	Green 2
8	Blue 2
9	Amber 2
10	White 2
11	Red 3
12	Green 3
13	Blue 3
14	Amber 3
15	White 3
16	Master (Dip1=On, Dip4=Off)
17	Strobo (Dip1=On, Dip4=Off)
Extention and control functions:	
Dip4=Off, Dip1=Off =>DipBCD:	use rotating switch for DMX start address (RS1-100, RS2-010, RS3-001) from 001 to 511
Dip4=Off, Dip1=On:	address+2channel (Master+Strobo)
Dip4=On, Dip1=Off:	switch on AutoRun-table functions: "100"=Prg.0-9, "10"=StepTime, "1"=FadeTime
Dip4=On, Dip1=On:	switch all channels on 50% - test function
Dip2=Off:	Mode 1 (5+2ch)
Dip2=On:	Mode 4 (15+2ch)
Dip3=Off:	standard curve
Dip3=On:	ultraSoft curve

INSTALLATION SPACE



04 MAINTENANCE

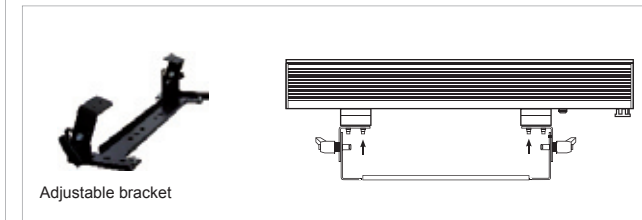
- To tackle all Safety Information- 01!
- Damage caused by inadequate cleaning or maintenance is not covered by warranty.
- Regular cleaning is demand (dust, dirt, ...).

Maintenance policy:

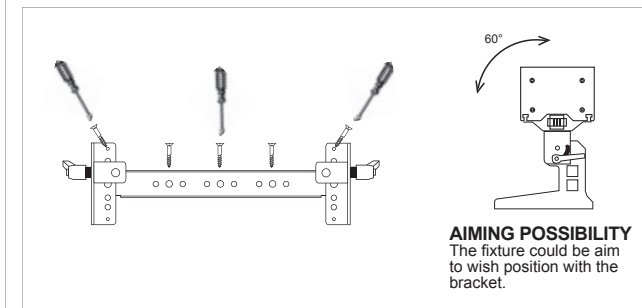
- Unplug mains before maintenance and at least 10 minutes cool off
- Appliance do not illegal open or demount
- Clean-up dust only from outer surface (for ex. scuttle, diffuser and lenses).
- Use vacuum or dumpy duster (warm water)
- Before reinstalling to check failure-free state – no wet parts!

Mechanical mounting of LL WASH D...SI-O65 and Adjustable bracket

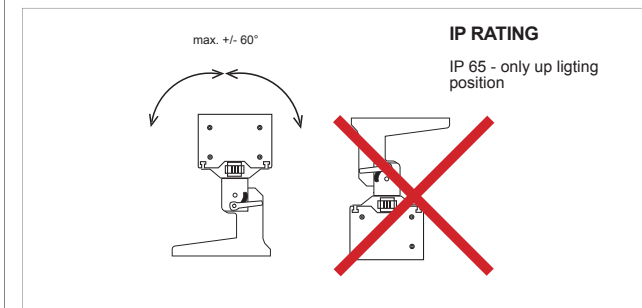
The installation of LL WASH D...SI-O65 and Adjustable bracket is easy. It is not necessary to open the fixture before the mechanical mounting.



2.1 Fit the adjustable bracket on the fitting and fit with screws.



2.2 The bracket fix to the solid surface with screws (minimal 4pcs).



LL WASH - DMX

Weight

LL WASH D23-SI-O65-22-34W-015-RGBAW-SC	3,00 kg	6,6lbs
LL WASH D63-SI-O65-66-102W-015-RGBAW-SC	5,50 kg	12,2lbs

ACCESSORIES

- LL WASH D23-SI-BRACKET-ADJ
- LL WASH D23-SI-BRACKET-FIX
- LL WASH D63-SI-BRACKET-ADJ
- LL WASH D63-SI-BRACKET-FIX