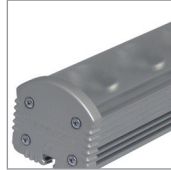


USER MANUAL

LL A3 LINE W/N

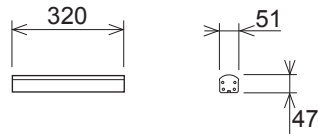
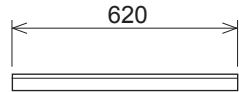
IP43: **LL33 104** **LL33 105** **LL33 108** **LL33 109**

IP65: **LL33 114** **LL33 115** **LL33 118** **LL33 119**



COMPLIMENTS ON YOUR PURCHASE!

All dimensions are in millimeters



Following items are included:

- LL A3 LINE W/N with 1,5m cable 1 pc.
- Fix bracket 1 pc.
- User manual 1 pc.

Additional items needed:

- Screws and washers M12 or 2xM10

Content:

01 SAFETY INFORMATION

- 01.1 Risk of eyes damage
- 01.2 Protection from electric shock
- 01.3 Fire prevention

02 PRODUCT SPECIFICATION

- 02.1 Technical Specification

03 INSTALLATION

- 03.1 Unpacking
- 03.2 Physical installation
- 03.3 Connecting to AC power

04 MAINTENANCE

ENVIRONMENT



Do not throw away the appliance with the normal household waste at the end of its life, but hand it in at an official collection point for recycling. By doing this, you help to preserve the environment.

01 SAFETY INFORMATION



WARNING!!!

Carefully read before installing, powering or servicing.
Nothing to do if anything misunderstand! Installation can be done only by a qualified professional in accordance with relevant local codes.

01.1 Risk of eyes damage



- Do not look directly into LED lamps.
- Do not look into light beam from a distance of less than 40 cm (16 inches)!

01.2 Protection from electric shock



- Shut down power before installation or maintenance.
- Luminaries and recommended AC power supply must be installed by a qualified professional in accordance with relevant local codes. Only acceptable source of AC power and frequency that complies with local building and electrical codes to use.
- Do not use or do not connect the products if the power cable, power plug or fixtures are any way damaged, wet, or if they are overheating.
- Do not modify, alter, or attempt to service the LeaderLight appliance. Doing so will void the warranty.
- Before removing or installing any cover or part of appliance disconnect it from AC power.
- Appliance always connect to earth (eltech.).

01.3 Fire prevention



- Follow all safety consideration.
- Thermostatic switches or fuses never to bypass.
- Device never shield. Around the axis of the fitting (180°) must be maintained space for cooling. Minimum distance from the surrounding objects must be 50mm (2 in.) (figure 1.1).
- LEDs never direct cover with filters or other materials.
- Allowing max. ambient temperature is 40°C (104°F).
- Luminaries never use without mounting brackets. The housing never install directly to the surface.

LL A3 SPOT 07 W/N is not suitable for standard dimming!

02 PRODUCT SPECIFICATION

02.1 Technical Specification

Lamp type:	300/600: 7/14 x W/N Acriche *
Lifetime:	Over 35 000 hrs
Optic:	Standard 5°, on request: 25°, 40°, 60°
Max. input power:	300/600: 28/56W
Power connection:	230V AC 1,5m cable
Net weight:	300mm/600mm: 1kg/1,5kg
IP:	IP43 or IP65
Ambient temp. (Ta):	Maximum 40°C
Cooling:	Conventional
Materials and finish:	Powder painted aluminium RAL 9006 (other colours on request)
Installation:	Surface mounting

* Acriche: W-White (6300°K), N-Neutral White (3000°K)

03 INSTALLATION

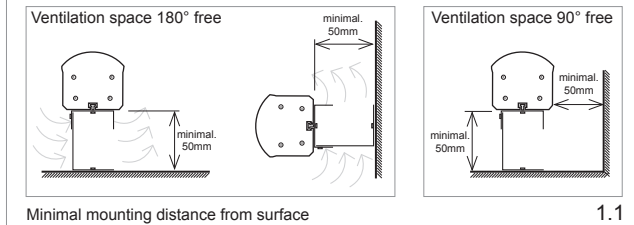
03.1 Unpacking

- Unpack carefully.
- This is electronic equipment and should be handled carefully.
- Damaged delivered package or if are any mechanical parts broken – it must be claim immediately by the transport company. Photo pictures as evidence are valuable for future claim.

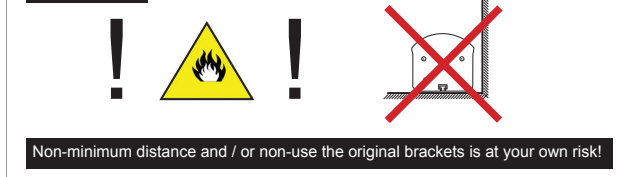
03.2 Physical installation

- Loading capacity of bearing area has to be at least 10 times the weight of all device clusters (luminaries, clamps, cables, ...).
- Hairbreadth from combustible materials is 0,5m.

INSTALLATION DISTANCE



WARNING!!!



03.3 Connecting to AC power



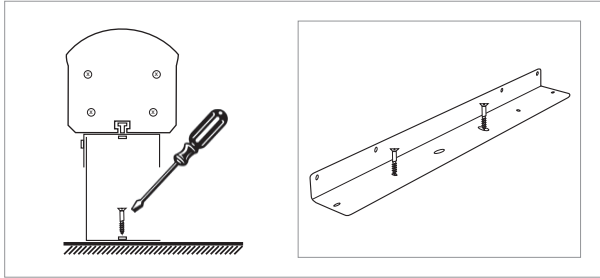
- **To tackle all Safety Information- 01!**
- For protection from electric shock, the device must be grounded (earthed)!
- It is not necessary to open the fixture before power supply.
- Power supply is solved simple with 1,5m cable

Cord plug connections:

Symbol	Pin	Wire Colour	Screw (US)
L	live	brown	yellow or brass
N	neutral	blue	silver
⊕	ground (earth)	yellow/green	green

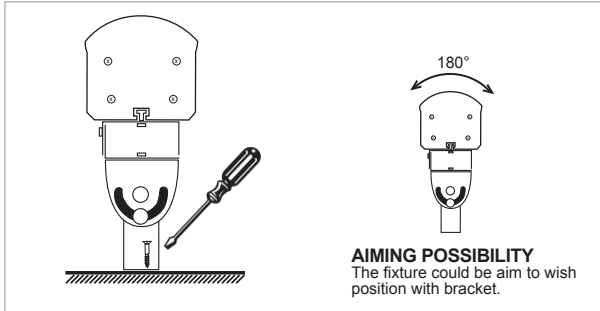
Surface installation

Mounting with fix bracket



Screw the fix bracket to the fixture and surface.

Mounting with adjustable bracket



Screw the adjustable bracket to the fixture and surface.

2.1

04 MAINTENANCE



- To tackle all Safety Information- 01!
- Damage caused by inadequate cleaning or maintenance is not covered by warranty.
- Regular cleaning is demand (dust, dirt, ...).

Maintenance policy:

- Unplug mains before maintenance and at least 10 minutes cool off
- Appliance do not illegal open or demount
- Clean-up dust only from outer surface (for ex. scuttle, diffuser and lenses).
- Use vacuum or dumpy duster (warm water)
- Before reinstalling to check failure-free state – no wet parts!

MOUNTING ACCESSORIES

Mounting on wall is easy using various adjustable wall brackets. Seen below.



ADJUSTABLE BRACKET

FIX BRACKET



3.1

Order code	Product name
LL33 104	LL A3 LINE 07 N 300 IP43
LL33 105	LL A3 LINE 07 W 300 IP43
LL33 108	LL A3 LINE 14 N 600 IP43
LL33 109	LL A3 LINE 14 W 600 IP43
LL33 114	LL A3 LINE 07 N 300 IP65
LL33 115	LL A3 LINE 07 W 300 IP65
LL33 118	LL A3 LINE 14 N 600 IP65
LL33 119	LL A3 LINE 14 W 600 IP65

Accessories:

LL41 101	LL BRACKET LINE 300 ADJUSTABLE
LL41 102	LL BRACKET LINE 600/1200 ADJUSTABLE
LL41 110	LL BRACKET LINE ADJUSTABLE DUAL (2pcs)
LL41 120	LL BRACKET LINE ADJUSTABLE TRIPLE (2pcs)

If you have any question please, contact support@leaderlight.sk