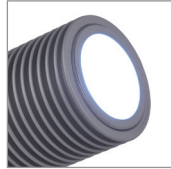


USER MANUAL

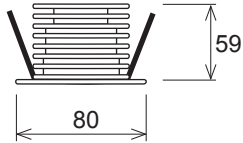
LL A3 BIG POINT 01 RECESSED

LL31 520 LL31 530



COMPLIMENTS ON YOUR PURCHASE!

All dimensions are in millimeters



Cut out: 49mm

Following items are included:

- LL A3 BIG POINT 01 BASIC with 1,5m cable 1 pc.
- LL HOLDER A3 BIG POINT RECESSED 1 pc.
- User manual 1 pc.

Additional items needed:

- Mounting accessories as necessary

Content:

- 01 SAFETY INFORMATION**
 - 01.1 Risk of eyes damage
 - 01.2 Protection from electric shock
 - 01.3 Fire prevention
- 02 PRODUCT SPECIFICATION**
 - 02.1 Technical Specification
- 03 INSTALLATION**
 - 03.1 Unpacking
 - 03.2 Physical installation
 - 03.3 Electrical installation
- 04 MAINTENANCE**

ENVIRONMENT



Do not throw away the appliance with the normal household waste at the end of its life, but hand it in at an official collection point for recycling. By doing this, you help to preserve the environment.

01 SAFETY INFORMATION



WARNING!!!

Carefully read before installing, powering or servicing.
Nothing to do if anything misunderstand! Installation can be done only by a qualified professional in accordance with relevant local codes.

01.1 Risk of eyes damage



- Do not look directly into LED lamps.
- Do not look into light beam from a distance of less than 40 cm (16 inches)!

01.2 Protection from electric shock



- Shut down power before installation or maintenance.
- Luminaries and recommended AC power supply must be installed by a qualified professional in accordance with relevant local codes. Only acceptable source of AC power and frequency that complies with local building and electrical codes to use.
- Do not use or do not connect the products if the power cable, power plug or fixtures are any way damaged, wet, or if they are overheating.
- Do not modify, alter, or attempt to service the LeaderLight appliance. Doing so will void the warranty.
- Before removing or installing any cover or part of appliance disconnect it from AC power.
- Appliance always connect to earth (eltech.).

01.3 Fire prevention



- Follow all safety consideration.
- Thermostatic switches or fuses never to bypass.
- Device never shield. Around the axis of the fitting (180°) must be maintained space for cooling. Minimum distance from the surrounding objects must be 100mm (4 in.).
- LEDs never direct cover with filters or other materials.
- Allowing max. ambient temperature is 40°C (104°F).

LL A3 BIG POINT 01 RECESSED W/N is not suitable for standard dimming!

02 PRODUCT SPECIFICATION

02.1 Technical Specification

Lamp type:	1 x Acriche (White 6300°K and Neutral 3000°K)
Lifetime:	Over 35 000 hrs
Optic:	Standard 5°, on request: 25°, 40°, 60°
Max. input power:	4,6W
Power connection:	220-240V 50/60Hz AC 1,5m cable On request US version: 100-120V
Net weight:	0,35 kg
Dimensions HxΦ:	59mm x 60mm without bracket
IP:	IP65
Ambient temp. (Ta):	Maximum 40°C
Cooling:	Conventional
Materials and finish:	Housing: powder-painted anodized aluminium RAL9006 (other colours on request)
Installation:	Recessed mounting

03 INSTALLATION

03.1 Unpacking

- Unpack carefully.
- This is electronic equipment and should be handled carefully.
- Damaged delivered package or if are any mechanical parts broken – it must be claim immediately by the transport company. Photo pictures as evidence are valuable for future claim.

03.2 Physical installation

- Loading capacity of bearing area has to be at least 10 times the weight of all device clusters (luminaries, clamps, cables, ...).
- Heigbreadth from combustible materials is 0,5m.

03.3 Connecting to AC power



- **To tackle all Safety Information- 01!**
- For protection from electric shock, the device must be grounded (earthed)!
- It is not necessary to open the fixture before power supply.
- Power supply is solved simple with 1,5m cable

- Cord plug connections:

Symbol	Pin	Wire Colour	Screw (US)
L	live	brown	yellow or brass
N	neutral	blue	silver
⊕	ground (earth)	yellow/green	green

04 MAINTENANCE



- **To tackle all Safety Information- 01!**
- Damage caused by inadequate cleaning or maintenance is not covered by warranty.
- Regular cleaning is demand (dust, dirt, ...).

Maintenance policy:

- Unplug mains before maintenance and at least 10 minutes cool off
- Appliance do not illegal open or demount
- Clean-up dust only from outer surface (for ex. scuttle, diffuser and lenses).
- Use vacuum or dumpy duster (warm water)
- Before reinstalling to check failure-free state – no wet parts!

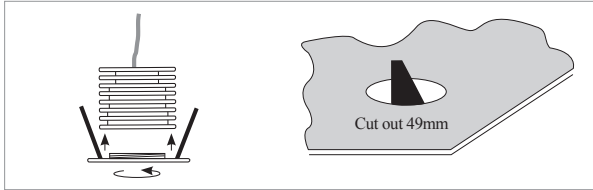
Installation

Recessed mounting is easy by using recessed holder

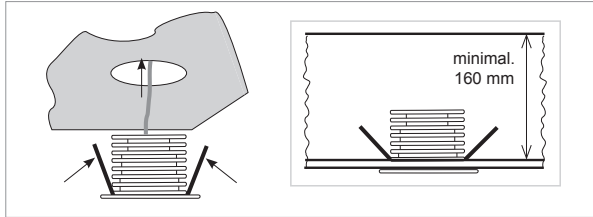
Recessed mounting with recessed holder



LL41 410



1.2.1 The recessed holder screw on basic unit. Cut hole in suspended ceiling. The allowed thickness of ceiling material is max. 12mm.



1.2.2 Connect the fixture to the power supply. Push the spring and insert the fixture into the hole.

Order code	Product name
LL31 520	LL A3 BIG POINT 01 RECESSED W
LL31 530	LL A3 BIG POINT 01 RECESSED N

If you have any question please, contact support@leaderlight.sk